

Please follow these steps to ensure your Camera is WI-FI enabled to provide you with a simple streamed line download.

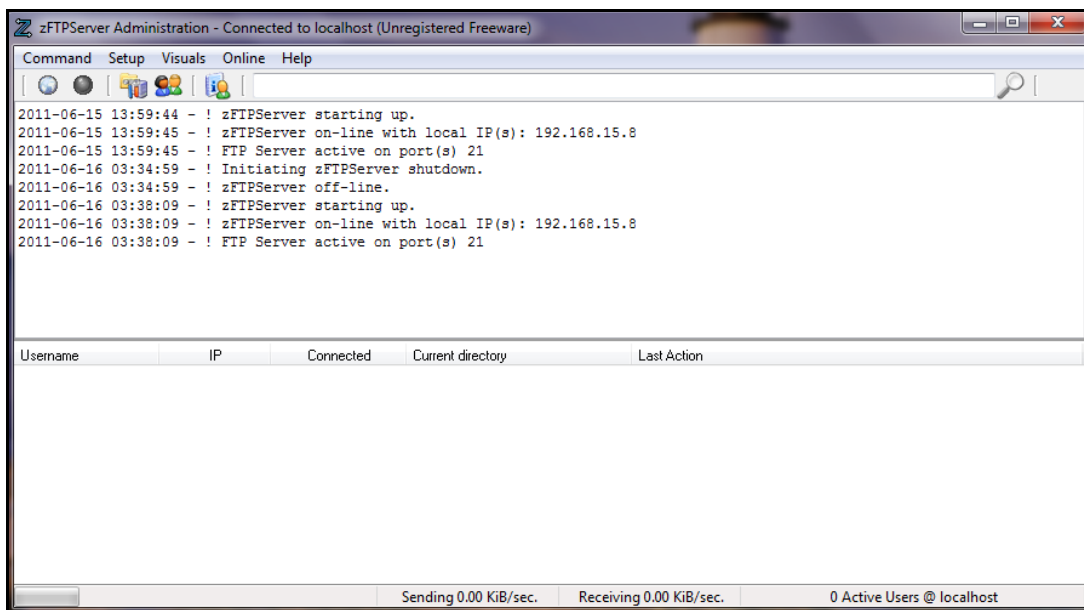
Power up Camera in Vehicle

Then:

1. Place your SD Card into your computer and place the file (janus_fw_v2_20110518.arm) into the update folder on the card. This file allows the camera to interface with the WI-FI Adaptor.
 - Config
 - Data
 - Update (This One)
2. Place the SD Card back into the camera and let it download the new update on the camera. Camera must run for 5-7 minutes.
3. Make sure that the camera's (fps) for inside and outside cameras is set to 1 fps

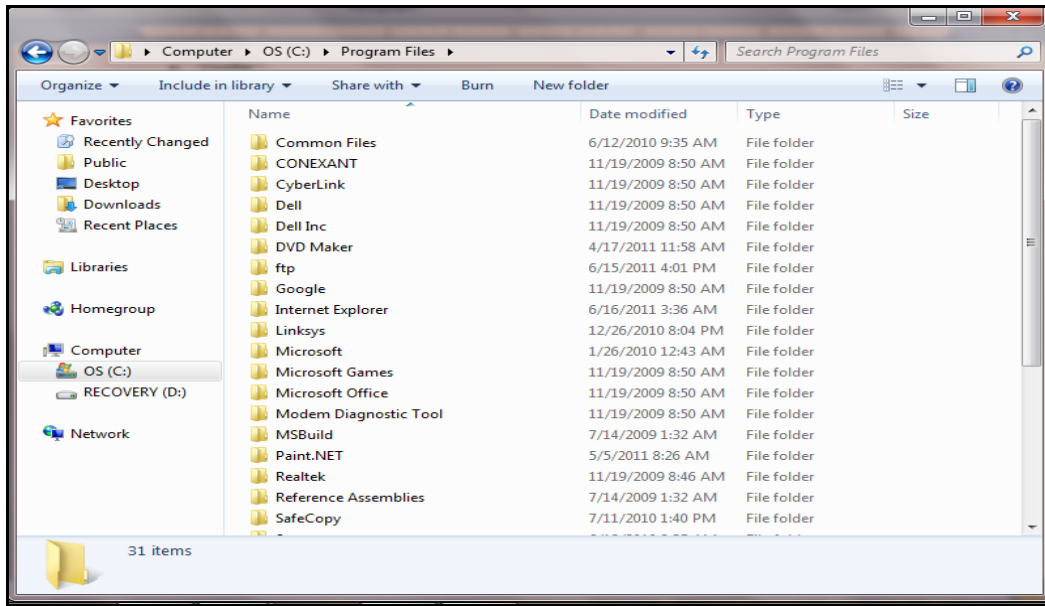
Next:

4. Download onto your host computer the **free download** from www.ZFTPserver.com
5. Create a free account.

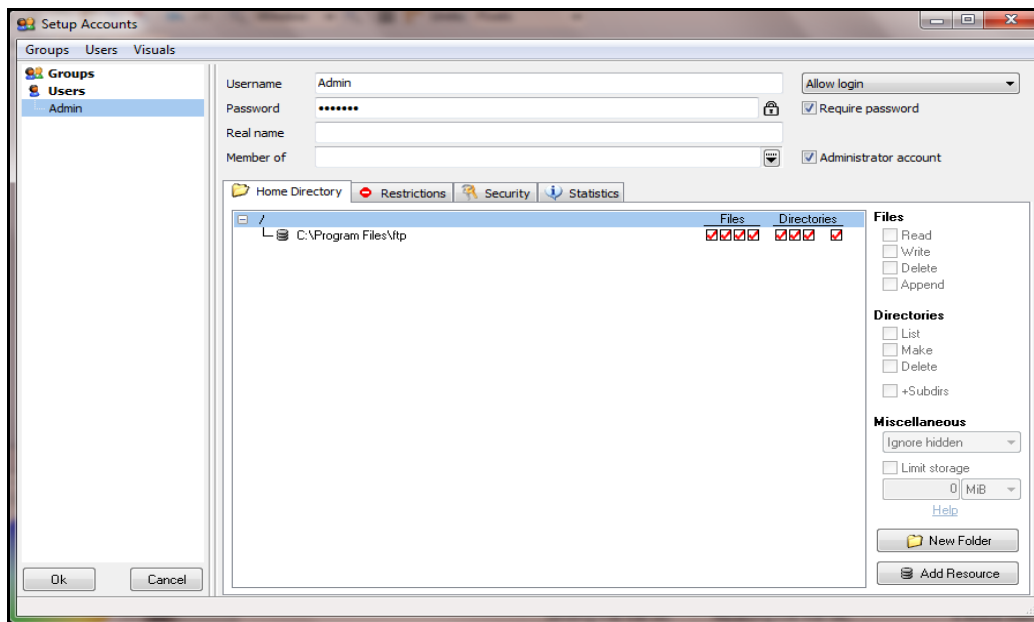


Next:

1. In your program file of your computer, create a sub directory and name it FTP.

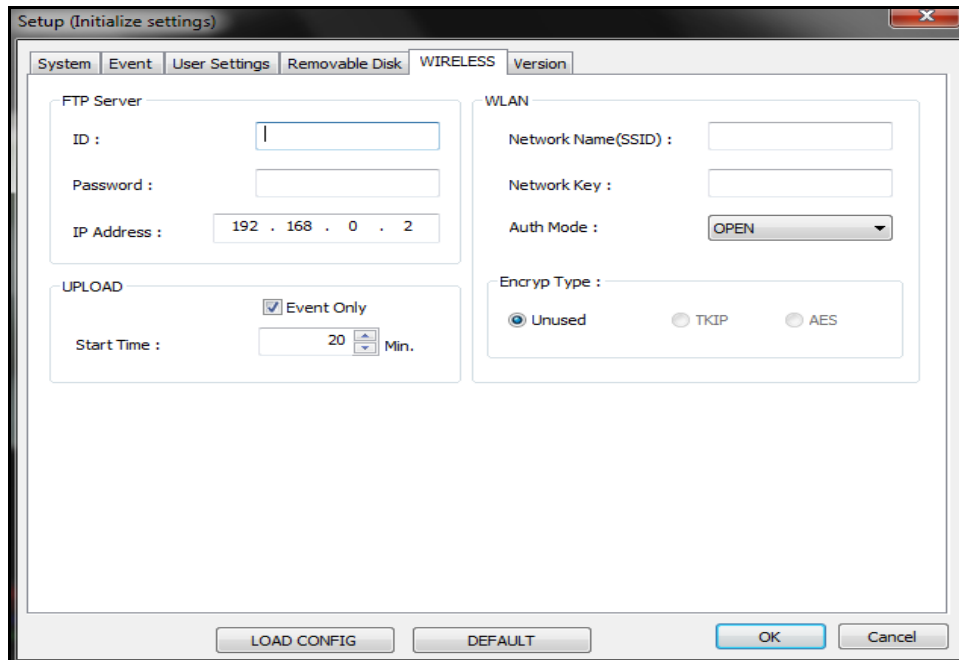


2. Locate this FTP file in your ZFTP account. Make sure to check all boxes under files, directories.

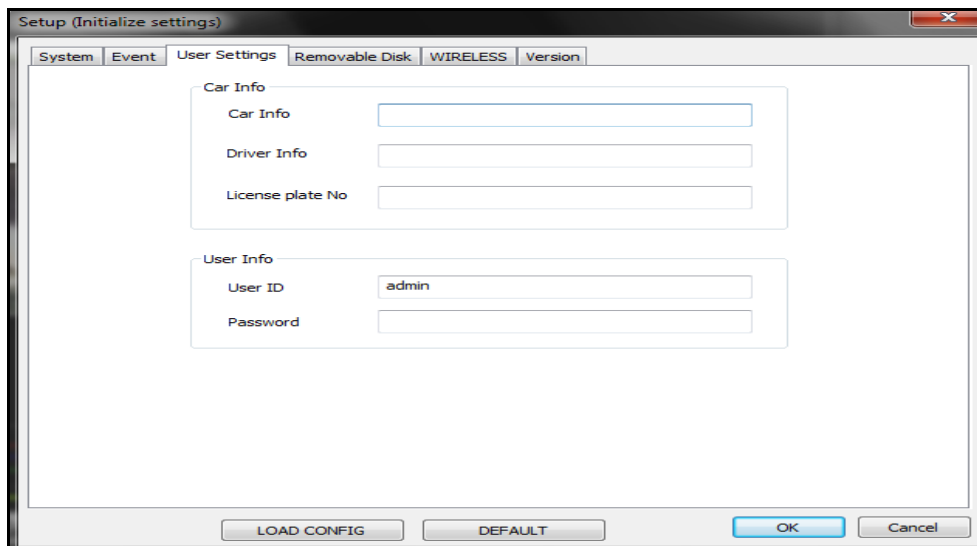


Next:

3. Download the Janus viewer (Version 3.3.3.0(2010-12-08)) to your computer.
4. On the wireless tab, FTP Server Side, make sure that you put your ZFTP user name and password, along with the IP Address of your computer. Check Event only and set Start Time to 1 minute.
5. On the Right side of the Wireless tab, make sure you use the WPAPSK and TKIP settings.

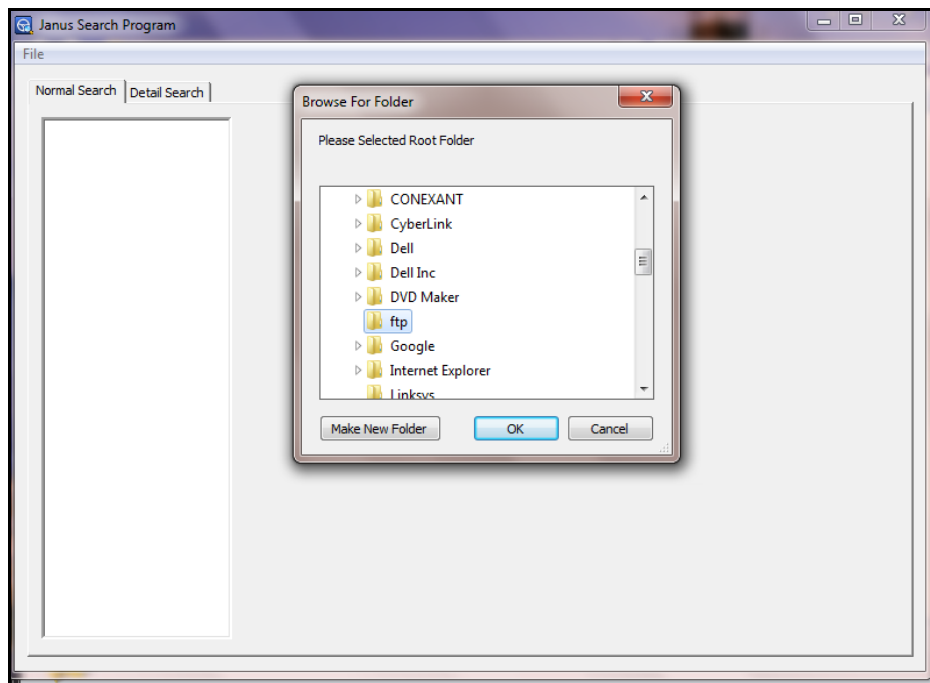


1. Under User settings (Third tab on top), make sure that you name your vehicle in a simple naming convention.



Apply setting to the SD card and move to the camera. Insert card into camera and allow 5-7 minutes for the camera to take the settings. Afterwards, create an event by pushing the emergency button. Make sure that the camera is downloading the events.

Download the Janus Search program.



Point it to the FTP file on your computer to enable an easy search of download files.

Once you have set up your fleet you will be able to download event files to your computer, or server.